



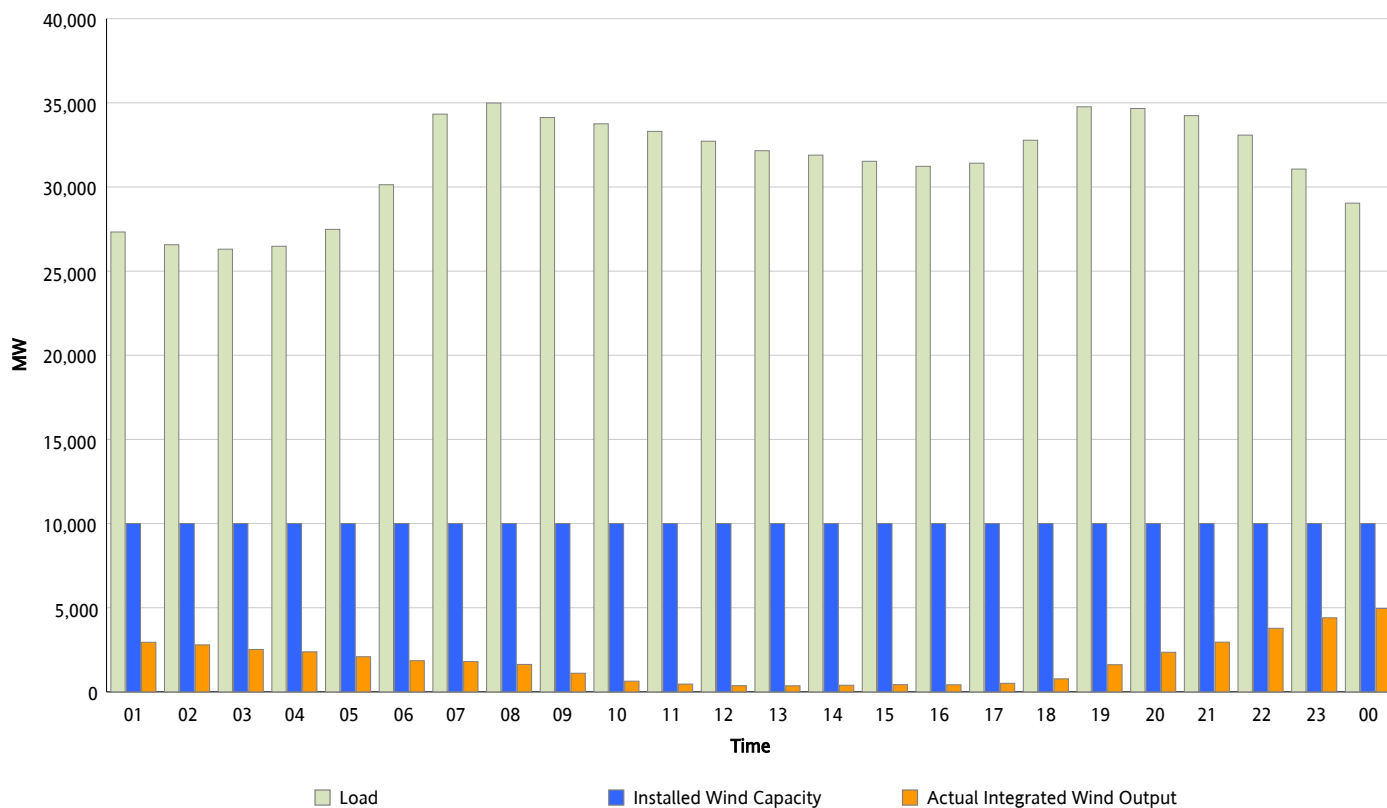
ERCOT Grid Operations

Wind Integration Report : 11/14/2012

Peak Load	34,988 MW
Load Peak Hour (HE)	08
Wind Over Peak	1,630 MW
Wind Record 11/10/12	8,521 MW
Max Wind Value*	5,152 MW
Wind Peak Time	23:52
Wind Integration %	18.13 %

Hourly Average Actual Load vs. Actual Wind Output

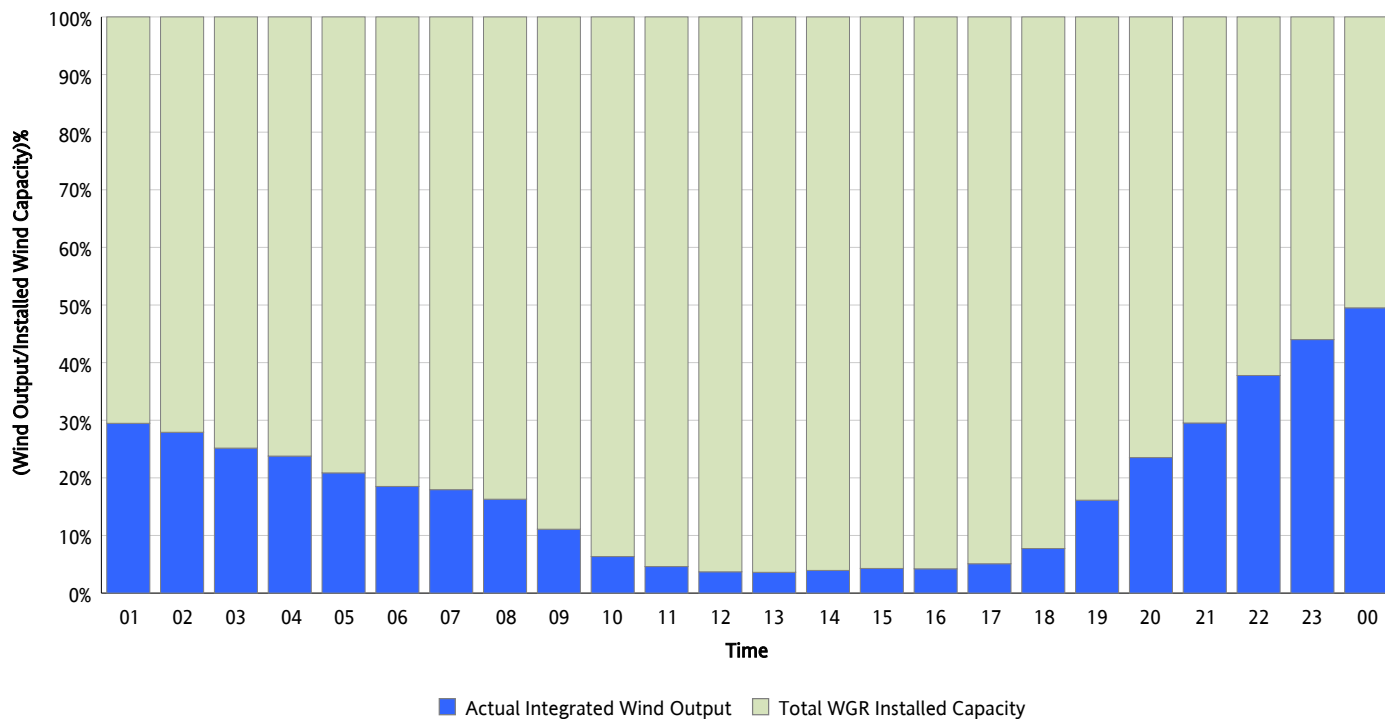
11/14/2012



* Wind Record and Wind Max represent instantaneous values and the rest of the values are integrated over the hour

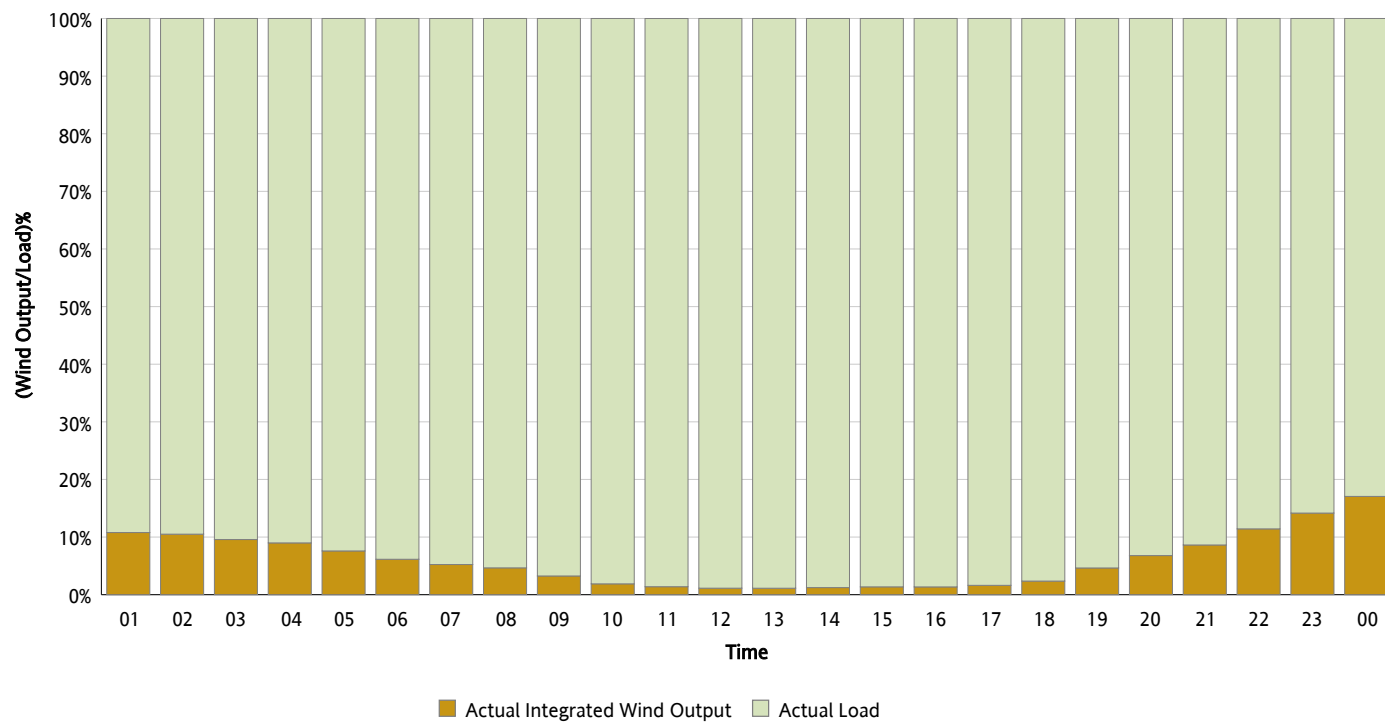
Actual Wind Output as a Percentage of the Total Installed Wind Capacity

11/14/2012



Actual Wind Output as a Percentage of the ERCOT Load

11/14/2012



ERCOT Load vs. Actual Wind Output

11/07/2012 - 11/14/2012

